



## HELPFUL NOTES

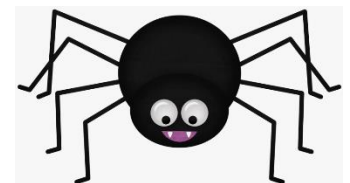
We celebrate various cultural festivals throughout the year such as Diwali, Hannukah, Chinese New Year among others. The children take part in a Christmas Nativity to end our Autumn term.



We have a holiday bear who lives at Pre School but LOVES to go away with children on their holidays. If you would like to take Holiday Bear away with you, please ask a member of staff. Remember to take lots of photos of him on his travels.

We would appreciate prompt collection of your child at the end of their session so that staff ratios are adhered to at all times.

Due to current funding situations in Early Years settings, more and more additional activities such as Rugbytots, Zoolab etc are not covered by government fees, therefore in line with other Pre Schools, we ask parents to make a suggested contribution of £10 a month via Direct Debit. This extra income makes many of the memorable and out of the ordinary opportunities possible and the children's delight in participating in these activities priceless.



(More information to follow)

As part of our phonics activities to support literacy development, communication and social interaction, all children take part in show and tell, whereby they are encouraged to find and bring objects into Pre School beginning with the letter of the week. These items should be small enough to fit in your child's tray and **MUST** be named to ensure their safe return.